



USER MANUAL

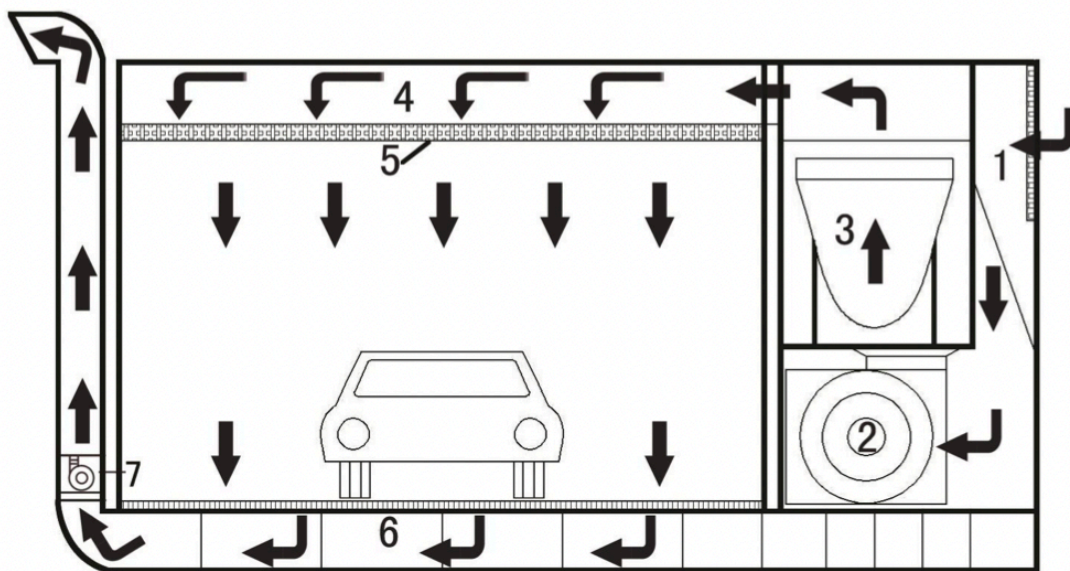
MODEL:

RIST

Content

- I. Working Principle
- II. Introduction for Control cabinet panel and parameters
- III. Operation Procedure
- IV. Cautions
- V. Equipment Maintenance
- VI. Common accident and Solutions
- VII. Electrical Theory and Wiring Diagram

- I. Working Principle
- Diagram of working principle



1. Primary Filter
2. Inlet fan
3. Heat converter
4. Static pressure chamber
5. Ceiling filter
6. Steel grid
7. Outlet fan

1) Working principle of spray paint

Turn on the inlet centrifugal fan and the outlet centrifugal fan; the fresh air goes through the first primary filter and then goes into the inlet centrifugal fan; The fan send the fresh air into the static pressure chamber; The air evenly goes into the interior room after the secondary filter (ceiling filter) and form a wind screen around the work piece; The air sink uniformly at 0.3m/s, and take the waste paint mist away; The air with waste paint goes down into the bottom through the steel gird, and get out of the room in the effects of the outlet centrifugal fan.

2) Working principle of baking

The oil burner heats the heat converter; The fresh air is changed into hot air through the heat converter; the hot air goes into the static pressure chamber and then goes into the room after the purification filter, then heats the workpiece by top-down; the air goes into the room again and becomes the hot air circulation after changing energy with the workpiece, in the function of conversion throttle, so that the room temperature increased gradually; When the temperature reaches the set value, the burner will automatically stop working, and when temperature drops to the lower limit value, it will start working automatically; Finally it will turn off the whole system when reaches the setting baking time.

3) Working principle of purification system

Environmental friendly paint booth has a layer of filter (fiberglass filter) at the bottom. The paint mist goes through the fiberglass filter under the influence of positive pressure, and then adsorb lots of paint mist. There are Activated carbon adsorption unit in the bottom of cabinet, the unabsorbed clean mist meet the secondary filter here and be exhausted to outside.

II. Introduction for Control cabinet panel and parameters

1) Control cabinet panel introduction

1. Temperature regulator
2. Timer and Timer Set
3. Temperature Heating(Baking)
4. Fan Working(Painting)
5. Lighting

2) Technical parameters

1. Voltage: 220V/60Hz/3Ph
2. Environment Suitable:
 - Temperature -20°C
 - Relative temperature \leq 85%
 - Air Flow: 27000 cbm/h
 - No penetration of strong magnetic field and no water and other liquids.
 - Lights: LED

3. Temperature control :

Painting: 0°C~30°C

Temperature difference: 1°C~3°C

Baking: 0°C~60°C

Temperature difference: 1°C~3°C

Display range : 0°C~60°C Resolution: 6°C

Display range : 0°C~60°C Resolution: 6°C

III. Operation Procedure

1. When spraying paint, turn on fan switch and light switch.
2. Drive the clean car in the room and close the door.
3. Turn on the fan for 3~5minutes, discharged the interior dust, wiped the car clean and start spraying.
4. If need heating while spraying, set the temperature regulator and turn on the fan switch.
5. When finished spraying, take out the inflammable, turn off the fans and light switch and begin baking.
6. Set the temperature and time. Make the spray/baking switch on the heating position.
7. Turn on the power switch and heating switch.(Note: For protection of electronic components ,please do not turn on the light when baking,)
10. Turn off the power switch and heating switch. Drive out the cars when the temperature drops down.

Meters Setting:1. Timer Setting: Timer work only when turn on the heating switch, and should set the time before turn on the electric lock. The timer has 4 digits, we can set the time as required. If need to add the time, then press the above"+", otherwise press the above "-".

For example, if the time required is 35 minutes, then press the "+"above the hundred digit to "5", the thousand digit to "3", now on the timer it shows "3500" , which is the required 35 minutes.

2. Temperature regulator setting: there are upper and lower limits on the regulator, you can set the temperature as needed. The indoor temperature will be between the upper and lower limits.

If need to add the temperature, then press the above"+", otherwise press the above "-".

IV. Caution

1. Check the voltage before turn on the power switch.
2. Be sure all the fan running right.
3. The inside room should keep clean.
4. Workers should keep their clothes (cap)clean, do not wear the fiber shedding clothes (cap).
5. The car should be cleaned before driven into the booth
6. The compressed air should be cleaned by the oil-water separator filter and make sure there exist no dust, water and oil.
7. The paint should be clean.
8. The electric control box and infrared heater should not be dismounted in addition to the maintenance section.
9. Volatile flammable materials such as paints and thinners can not be stored in the booth.
10. No fire in the booth.

V. Equipment maintenance

Check regularly the terminal in the control box, tightened it if any loose. It should be shut down immediately if any abnormal..

The wires going into the leakage circuit breaker in the control box must be right.

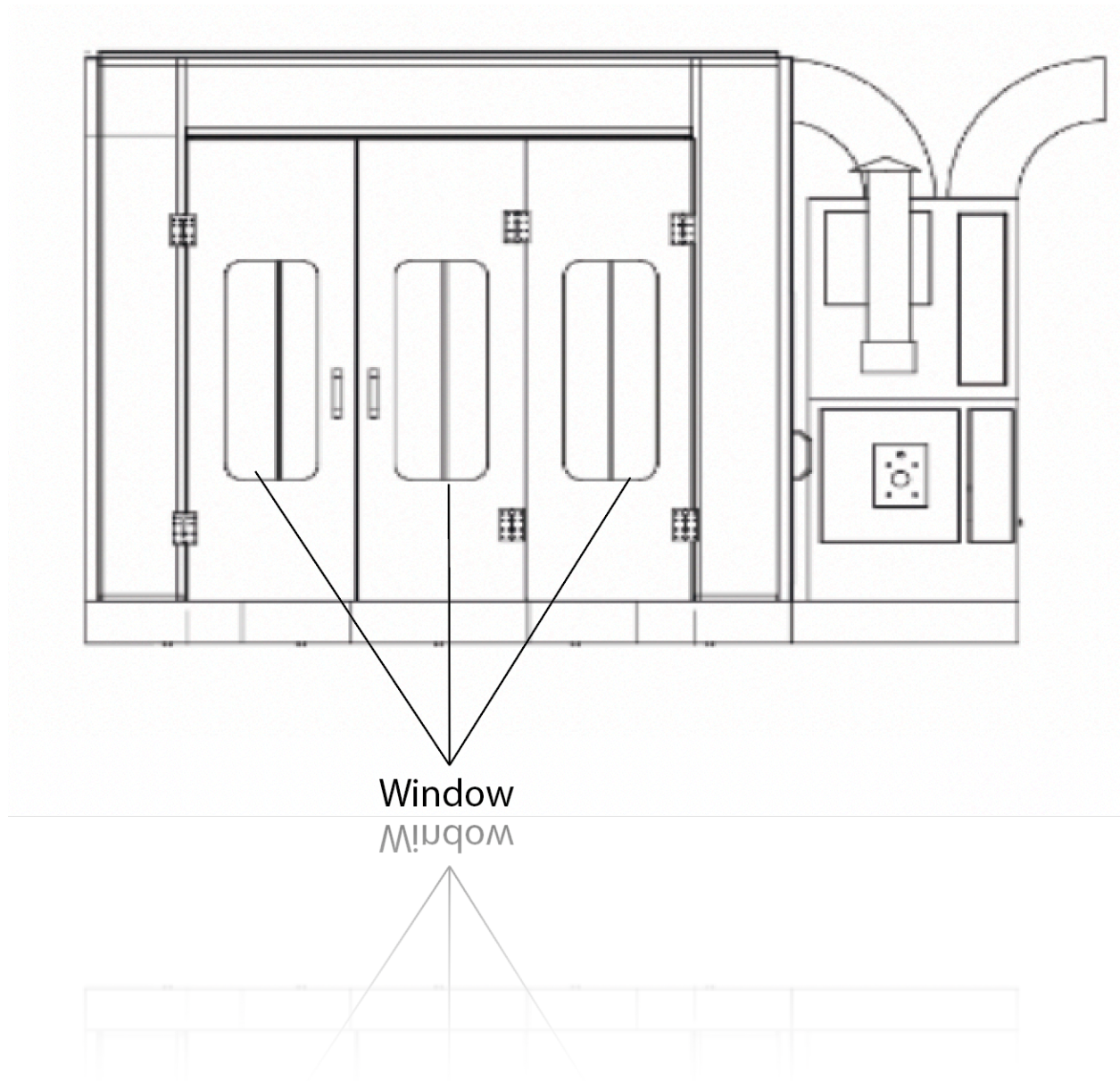
The leakage circuit breaker should be checked every month.

If baking work needed after long-term not used for baking, you should turn on the power switch for 2 minutes then turn off, and turn it on again after 1 minute, keep this way for 7~8 times.

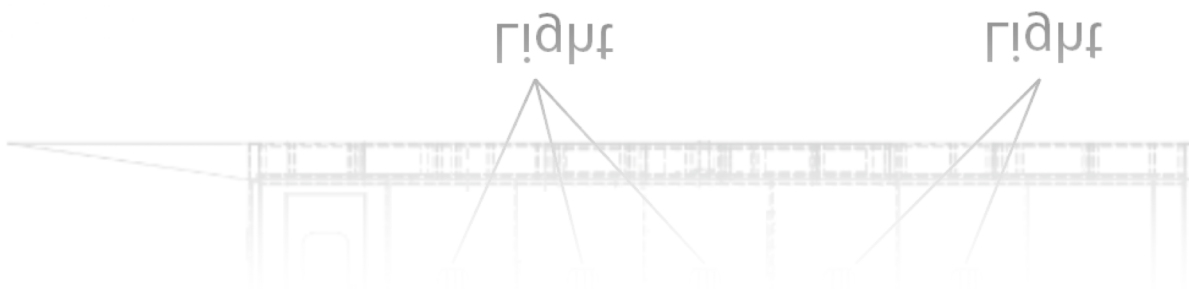
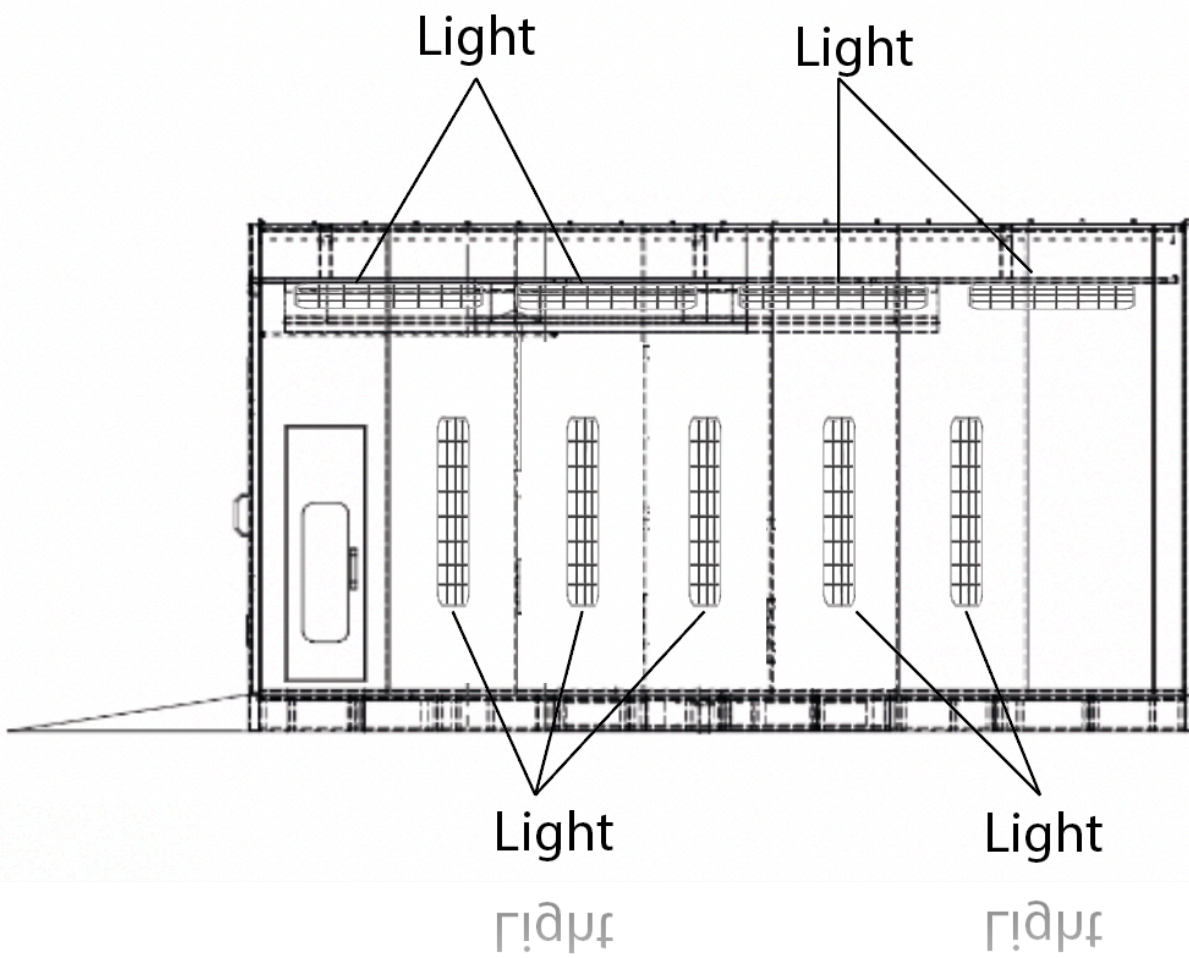
The filters should be changed regularly to prevent clogging.

Lightning and Windows Planning.

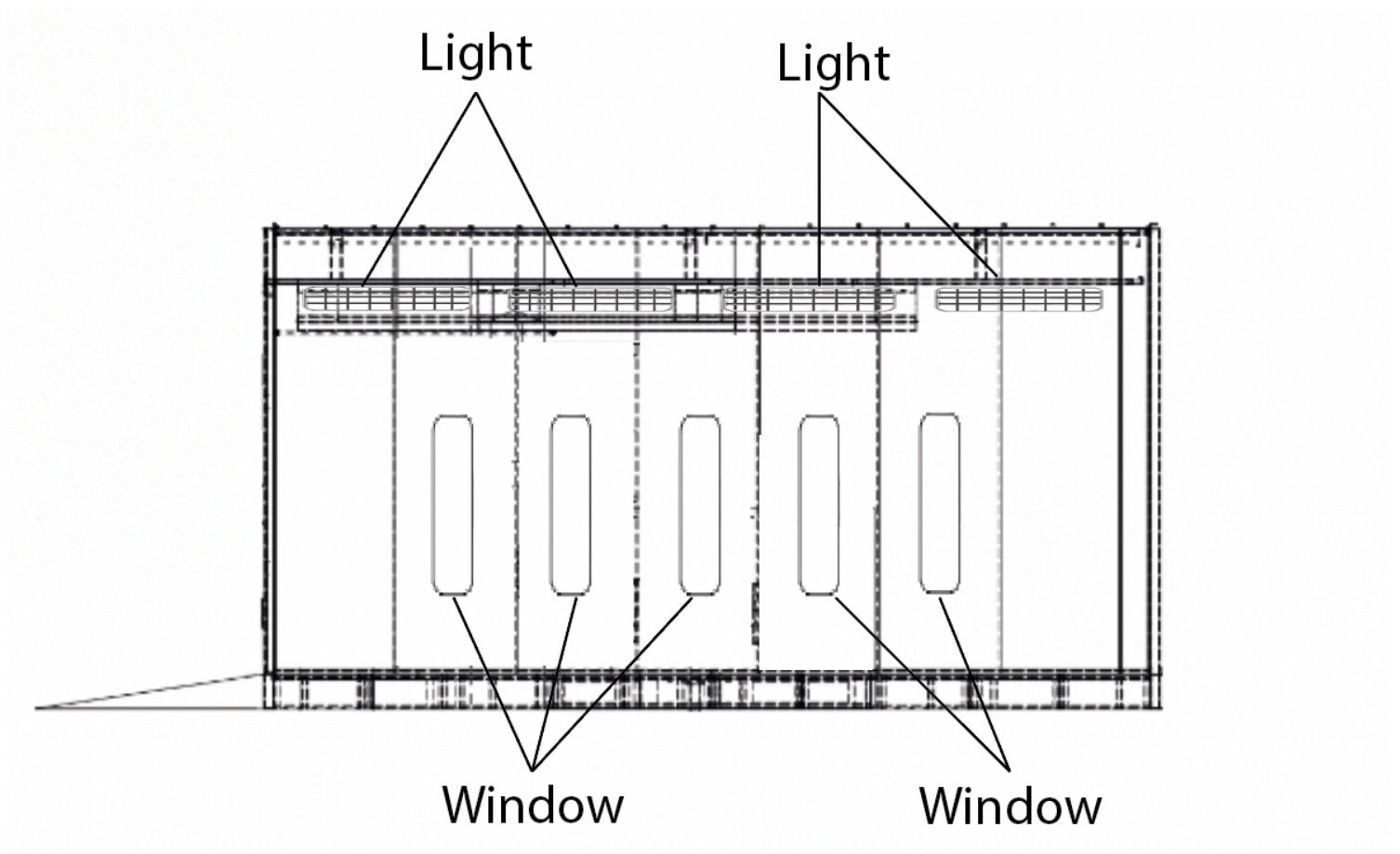
Front View



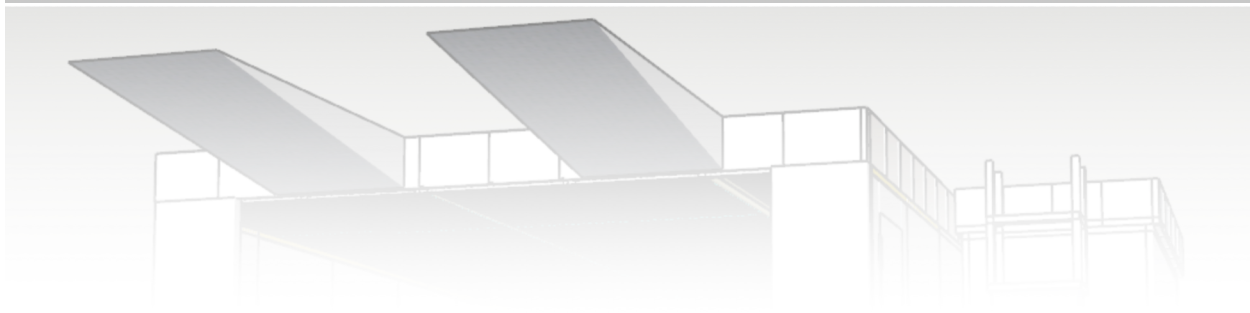
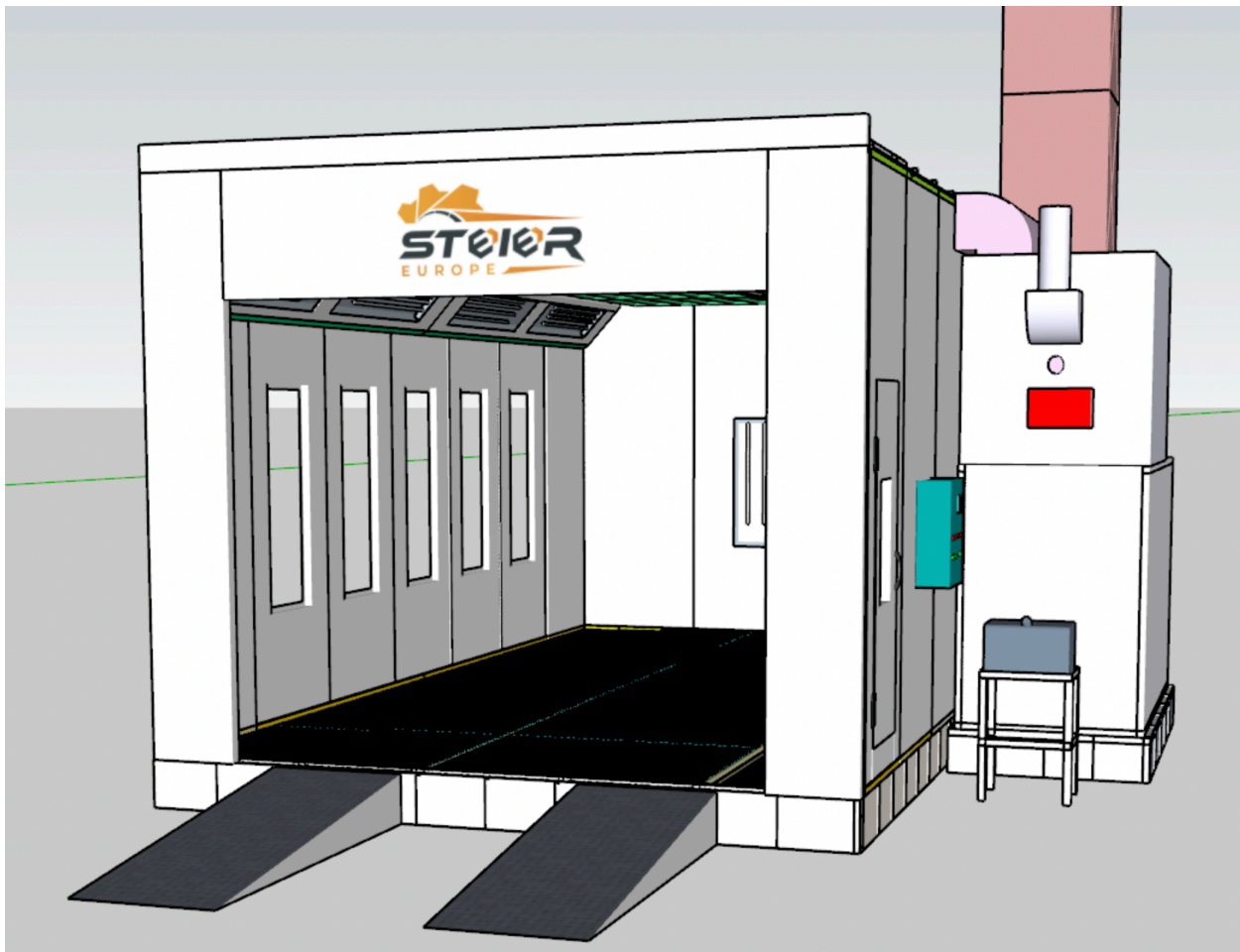
Side View

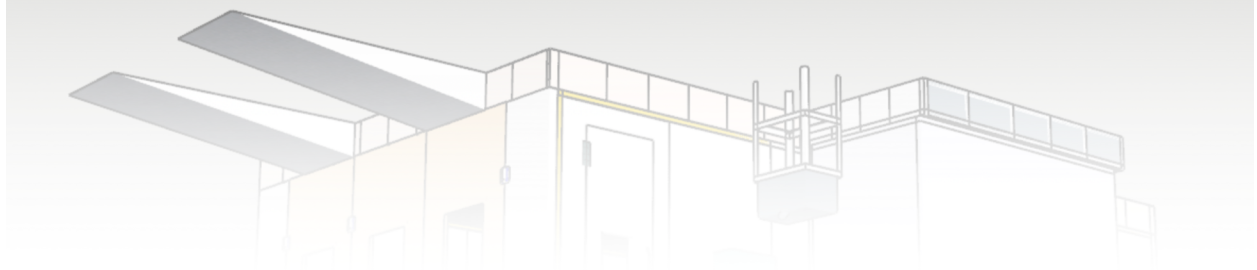
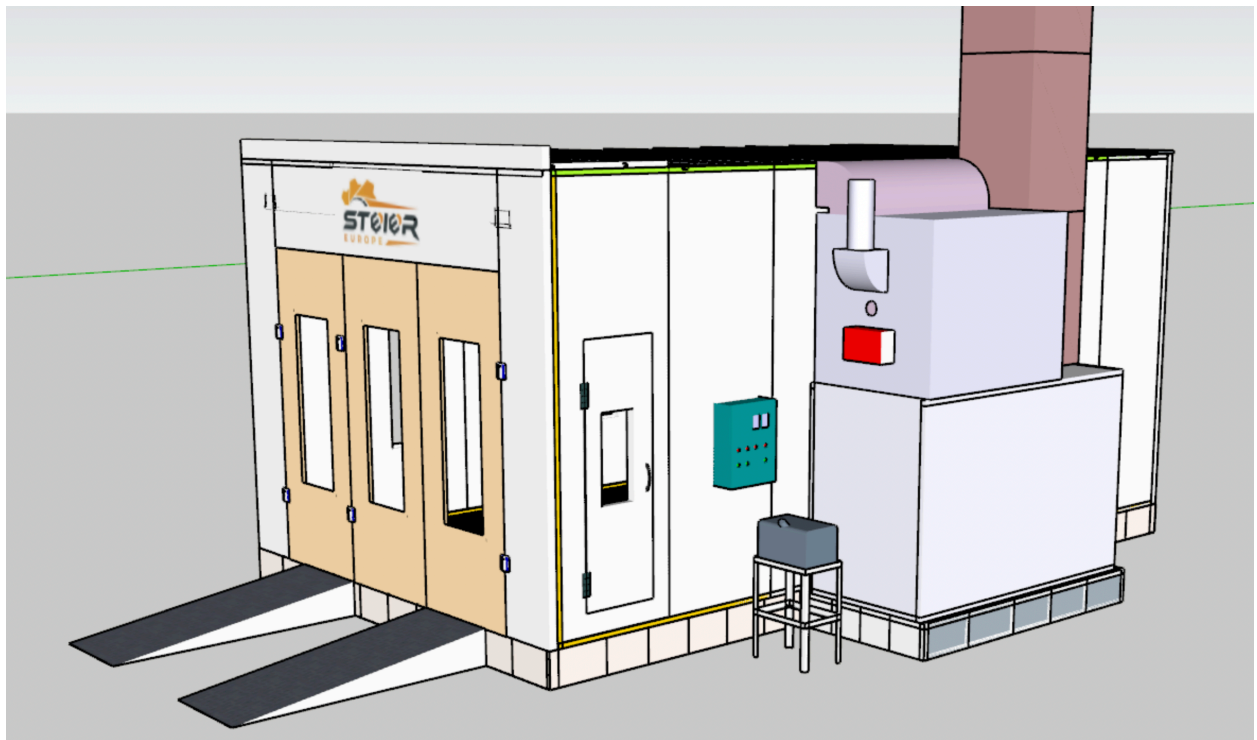


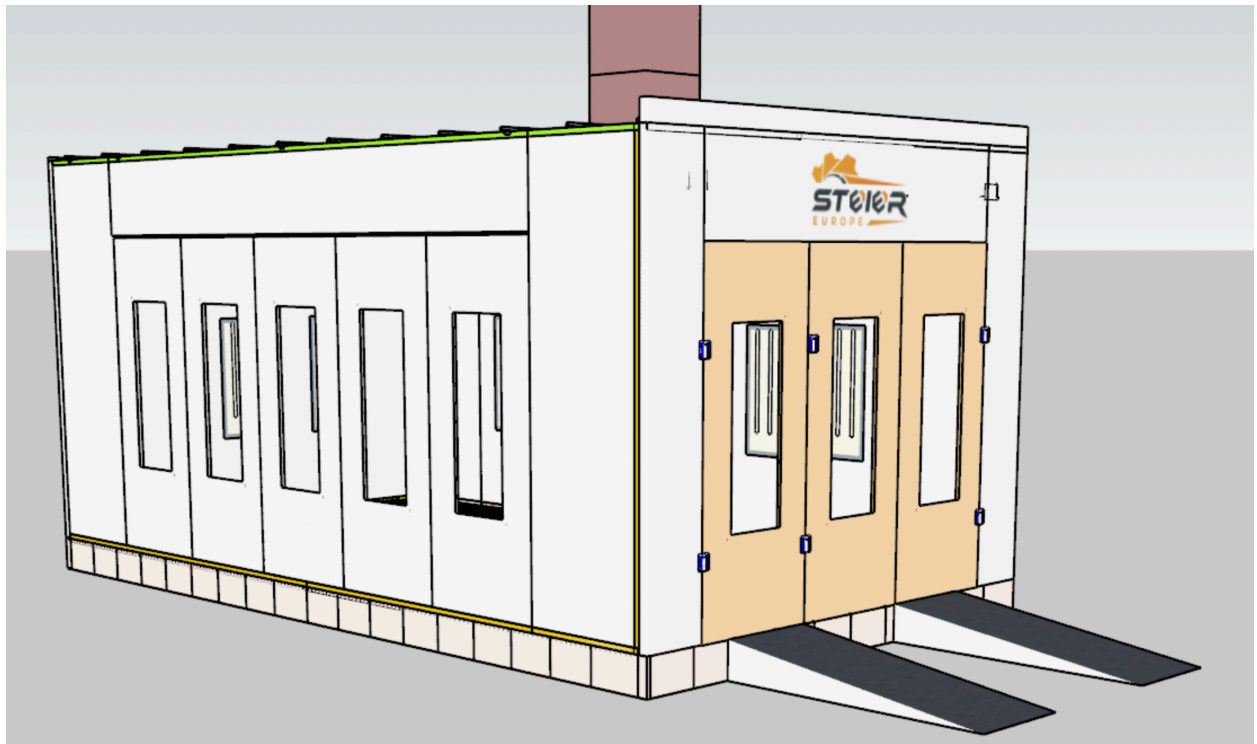
Side View



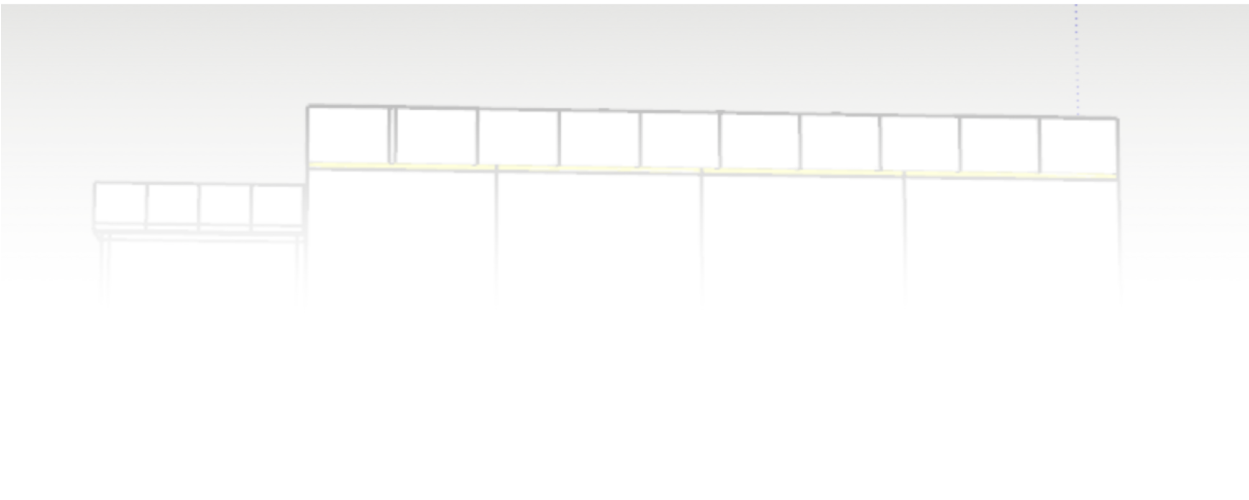
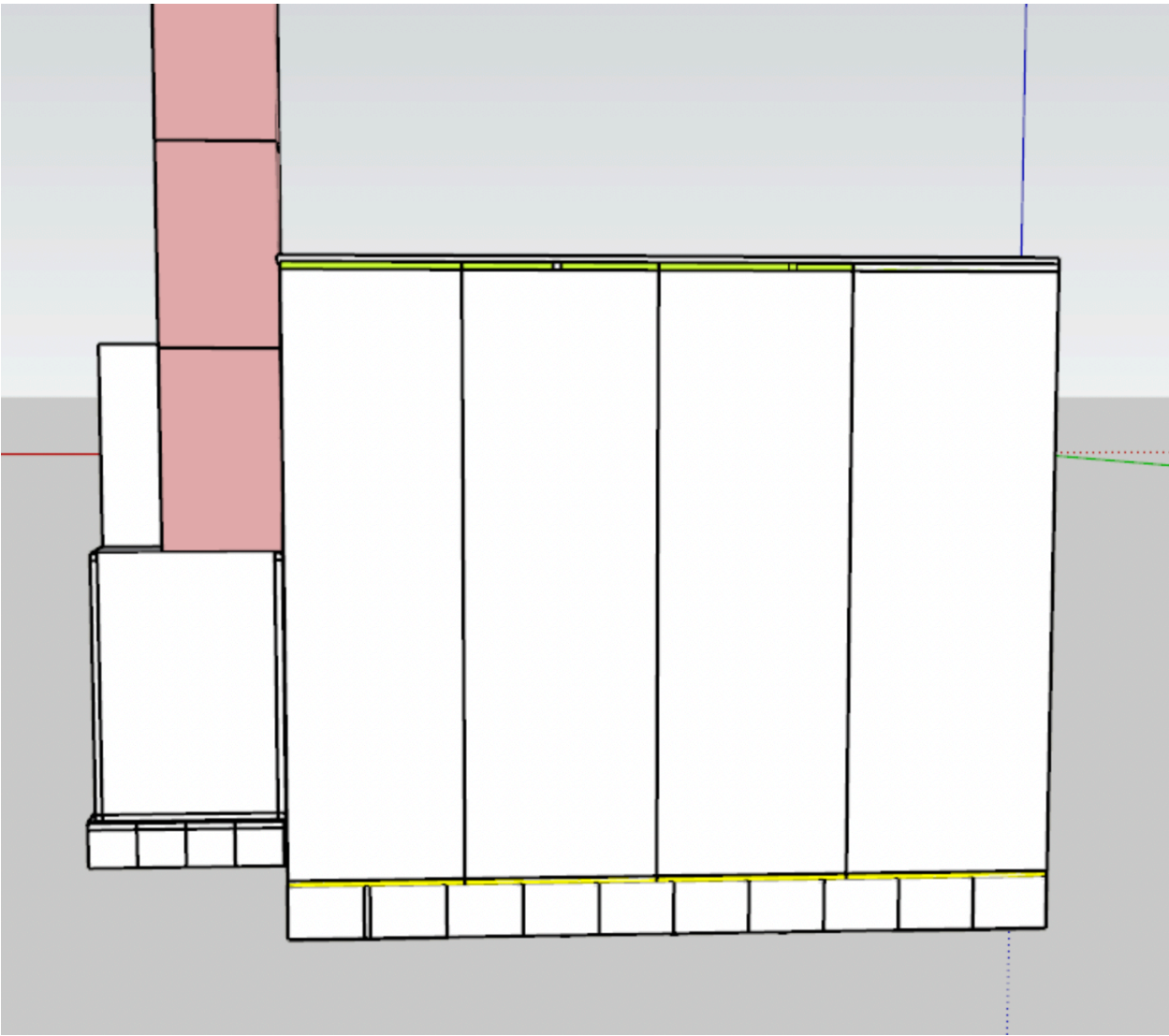
3D Design Pictures











GFG ENGLAND
DIGITAL HVLP
Spray Paint Gun

USER MANUAL



Features and Technical Data

Body Integrated

Swivel Joint

Standard Nozzle: Paint and Clear Layer

0.8 mm

1.0 mm

1.2 mm

1.3 mm

1.4 mm

1.8 mm

Recommended gun inlet pressure

2.8 - 3 BAR

36 - 43 PSI

Optimum Spray Pressure

2.0 BAR

Maximum gun inlet pressure

10 bar / 145 PSI

Spray Distance

15 - 23 cm

6 - 9 inch

Paint deposit

600 ml

Air Consumption

5.2 CFM

Professional spray gun High quality hvlp paint sprayer painting gun.

Paint supply mode: Gravity.

Volume of gun barrel: 600mls

Weight (Gun + pot): 768gms

Digital Regulator on gun body.

Nozzle: stainless steel

Gun needle: stainless steel

Air cap material: chrome plated brass
Transmission efficiency (paint utilization):
65% -85%

Application: automotive, auto maintenance, sheet metal, metal, furniture,
plastics, construction



